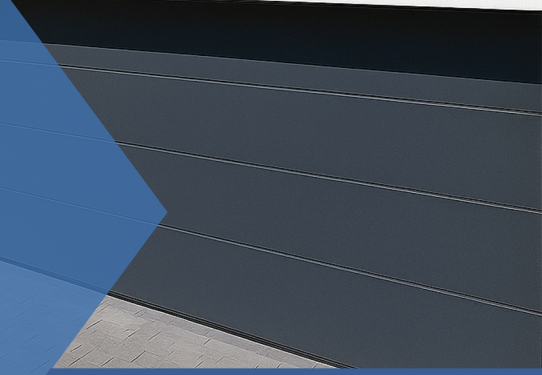


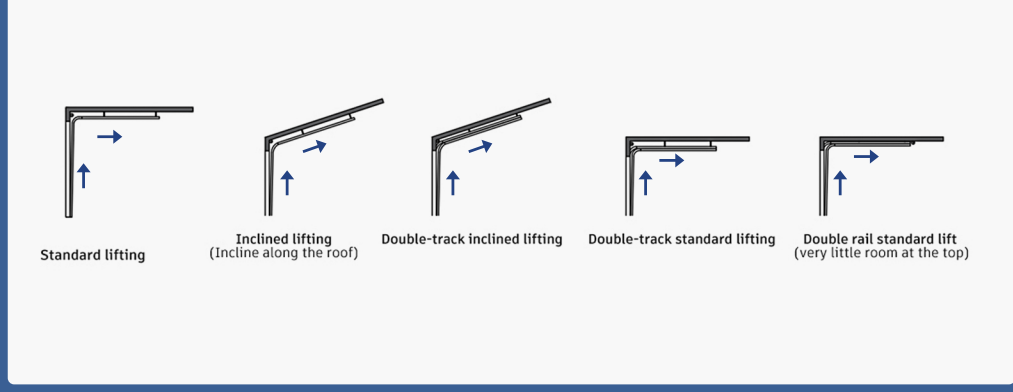
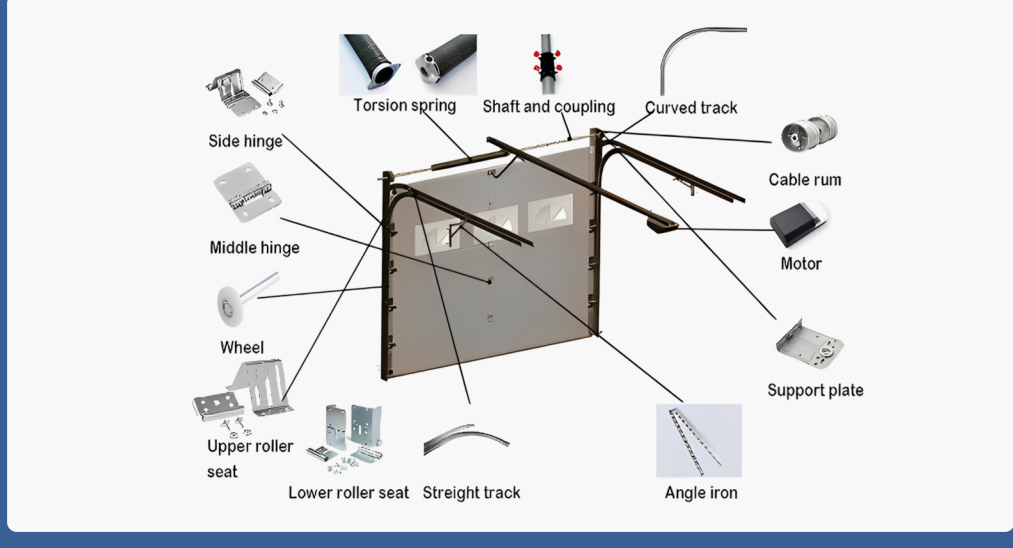
**INDUSTRIAL DOORS
MANUFACTURER**

Sectional Garage Door

Thermal Insulation Wind Resistant
Decades of Manufacturing Experience
Global Sales Experience



Our Products



High-strength foam sandwich door panel

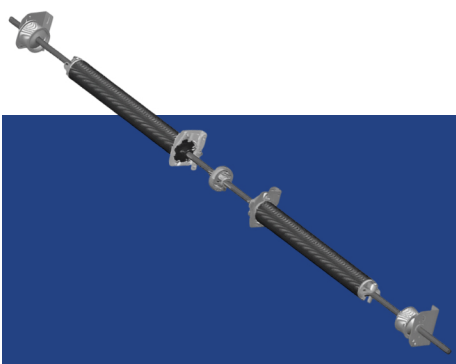
Double-layer 0.4mm galvanized steel plates are filled with 48±2kg/m³ polyurethane foam inside.

Better heat insulation and wind resistance.

Advanced intelligent motor

The multi-functional intelligent motor helps you easily achieve comprehensive intelligent control of your garage.

- Automatic safety reverse
- Overload protection
- Manual mode in case of power failure
- Dynamic force sensing
- Auto timer closing



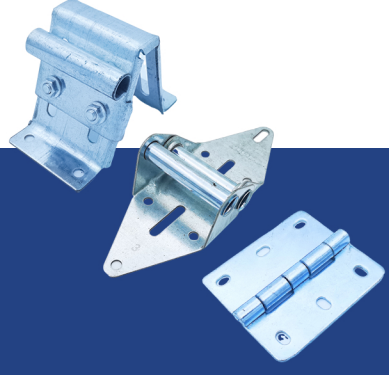
Long-life spring

High-quality springs designed for up to 100,000 opening and closing cycles, ensuring long-lasting performance and reduced maintenance costs.

With anti-break safety feature.

High-quality components

Thicker, larger, and more durable hardware components are used to enhance overall structural stability and extend service life, making the door suitable for high-frequency industrial use.



Styles



Standard panel

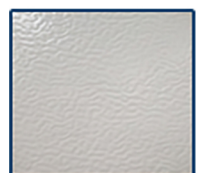


Finger protection panel

PANEL TEXTURE



woodgrain



orange peel



micro-wave



smooth

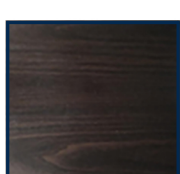
PANEL STYLE



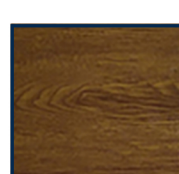
COLOR



200 RAL code colors



Imitation wood grain(dark)



Imitation wood grain(light)